

ATLANTIC FOREST GREAT RESERVE

VALE DO GIGANTE PORTAL

Antonina



@GrandeReservaMataAtlantica
www.grandereservamataatlantica.com.br



BRAZILIAN TANAGER



PHOTOGRAFING BIRDS

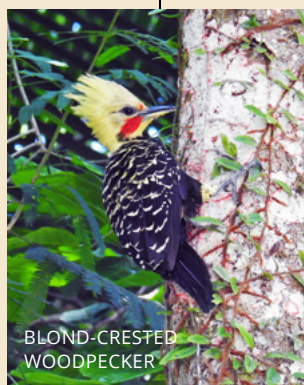


RED-NECKED TANAGER

BIRDWATCHING

The Vale do Gigante Portal is a paradise for birdwatching. Over 500 bird species can be found here, thanks to a combination of diverse habitats—such as hillside and lowland forests, mangroves, restinga (coastal forest), and wetlands—and their well-preserved condition, which provides shelter, food, and viable populations.

Many species can be seen right alongside the road, from well-marked forest trails, or during boat trips through the mangroves and pirizais (areas with specific wetland vegetation). Among the rare species found here is the Marsh Antwren (*Formicivora acutirostris*), commonly found at the mouths of the Nunes and Cacatu rivers, as well as in the wetlands of local nature reserves. Other species easily found here include the Black-headed Berryeater (*Carpornis*



BLOND-CRESTED WOODPECKER

melanocephala), the Blond-crested Woodpecker (*Ceuleus flavescens*), the Buff-throated Purpletuft (*Iodopleura pipra*), and the Restinga Tyrannulet (*Phylloscartes kronei*), which is endangered. There are also many strikingly colorful species—not necessarily rare, but impressive nonetheless—such as the Brazilian Tanager (*Ramphocelus bresilius*), the Red-necked Tanager (*Tangara cyanocephala*), the Seven-colored Tanager (*Tangara seledon*), and the Rufous-headed Tanager (*Hemitraupis ruficapilla*).

Finally, some rare and exclusive species also inhabit the region, such as the Black-fronted Piping Guan (*Aburria jacutinga*) and the Solitary Tinamou (*Tinamus solitarius*).

Local guides are available to accompany visitors in this region—learn more on our website!

ATLANTIC FOREST GREAT RESERVE

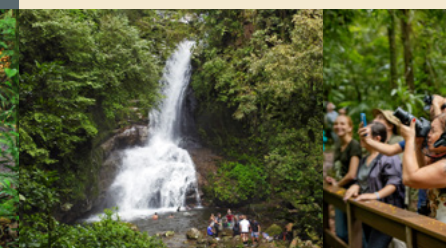
The Atlantic Forest Great Reserve is a voluntary initiative that brings together a diverse range of stakeholders—public, private, community-based, non-governmental, and academic—to promote regional development actions focused on nature-based tourism within the largest remaining continuum of Atlantic Forest in the world. Covering around 3 million hectares of well-preserved natural environments, the area spans the states of São Paulo, Paraná, and Santa Catarina. Home to rich wildlife, mountains, caves, waterfalls, bays, mangroves, and beaches, this region is considered a significant natural, cultural, and historical heritage site. The initiative aims to position it as a nationally and internationally recognized nature tourism destination.

This movement was born from the belief that preserving and conserving

nature is essential for the planet's balance and for future generations. It promotes the idea that tourism can be a positive economic activity when practiced responsibly and sustainably, enabling a restorative economy and improving the quality of life for dozens of traditional and historic communities. This work represents a unique opportunity to conserve one of the world's most important biodiversity hotspots. The Atlantic Forest is a national treasure of Brazil and must be valued, recognized, and preserved by all.



ATLANTIC FOREST



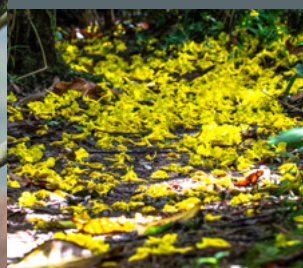
SALTO DO SACI



ENVIRONMENTAL EDUCATION



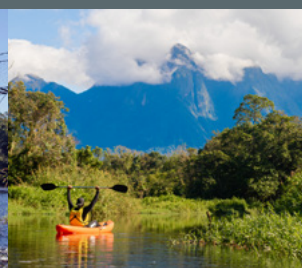
MERGULHÃO RIVER



TRAILS



CYCLING



CANOEING

SPORTS, ADVENTURE AND NATURE

For those seeking outdoor activities, the Vale do Gigante Portal offers abundant opportunities to connect with nature. The combination of engaged local entrepreneurs and support from public authorities has transformed this region into a hub for adventure tourism.

Visitors who enjoy tranquility will find numerous easily accessible crystal-clear rivers, shaded by the forest. Those in search of adventure will be delighted by kayaking down the Nunes River, which offers a privileged view of the Ibitiraquire Range (the 'sleeping giant'). For those in search of adrenaline should head to the Cachoeira River. Its stronger currents—due to the presence of a

hydroelectric plant—make it ideal for rafting, as the rapids' difficulty ranges between Class I and III. This Portal hosts various sporting events, including hiking, trail running, bike tourism, and kayaking gatherings.

The countless trails available to visitors make this region a true treasure, well worth visiting more than once. The trails can lead to archaeological sites, viewpoints, waterfalls, natural pools, and more—there are various routes to choose from. The nature reserves not only ensure the perpetuity of the ecosystems and their services but also provide a safe and well-structured place for visitors.



KAYAKING

THE VALE DO GIGANTE PORTAL IN THE LITORAL DO PARANÁ SECTOR

The Litoral do Paraná Sector is the true heart of the Atlantic Forest Great Reserve, thanks to both its central location and its incredible diversity—from the Serra do Mar mountains to stunning bays, beaches, and islands.

At the foot of the imposing Pico Paraná, the highest peak in Southern Brazil, lies the Vale do Gigante Portal. The region gets its name from a mountain range that, when seen from the plains below, resembles a giant slumbering figure. The municipality of Antonina has been encouraging the region to offer an increasingly diverse range of attractions for visitors. There are already many,

including accommodations, restaurants, local guides, adventure sports (such as rafting and canoeing), hiking, flora and fauna observation, handicrafts, organic and agroecological products, native bee honey, and cultural activities. Several communities are working together to develop the region: Bairro Alto, Cachoeira de Cima, Cacatu (the cradle of Japanese colonization in Paraná), Rio do Nunes and Faisqueirinha. Visitors can reach this area via the PR-340, a paved road that also leads to the old Governador Pedro Viriato Parigot de Souza Hydroelectric Plant.



TYPICAL GASTRONOMY



RELAXATION



LOCAL PRODUCTS

CULTURE AND GASTRONOMY

Just like the entire Litoral do Paraná Sector, the Vale do Gigante Portal also stands out for its local products, traditional cuisine, and rich cultural heritage. Food production here is in harmony with nature, yielding agroecological products of the highest quality. Many of them use native species, such as juçara açaí, which boasts superior nutritional properties that surpass those of the Amazonian variety. The associated family farmers are even responsible for providing meals for Antonina's youth.

All these fresh ingredients, combined with the nearby mangroves, contribute to unique and privileged gastronomy. Delicious dishes can be found throughout the region, deeply rooted in Caiçara, colonial, and Japanese culinary traditions. Key ingredients include crab,

cassava (in its many forms), banana, peach palm (pupunha), and bamboo.

An incredible historical curiosity is that right in the center of the Vale do Gigante Portal lies Colônia Cacatu—the the first Japanese colony in the state of Paraná, established in 1917 by immigrants from the city of Kobe. Whether in rice or cachaça production, these immigrants played a significant role in the history of Antonina. Their descendants still preserve and celebrate the century-old Japanese traditions and culture in the region.



JAPANESE MEMORIAL IN COLÔNIA CACATU

Furthermore, this land is rich in archaeological sites, featuring ancient sambaquis (shell mounds), pre-Columbian artefacts from the Indigenous peoples who once lived here, and ruins from centuries past.

ATLANTIC FOREST GREAT RESERVE

VALE DO GIGANTE PORTAL



Conceito e design: Andrés Stubelt, Ricardo Borges, Ignacio Jiménez, Lenise Scharf
 Textos: Ricardo Borges e Solange Latenek
 Revisão: Karen Parolin de Castro
 Fotografia: Gabriel Marchi, Reginaldo Ferreira, José João da Silva, Zig Koch, Cynthia Duarte, Everson Gelasko, Faustino Avelino e Harvey Schlenker.

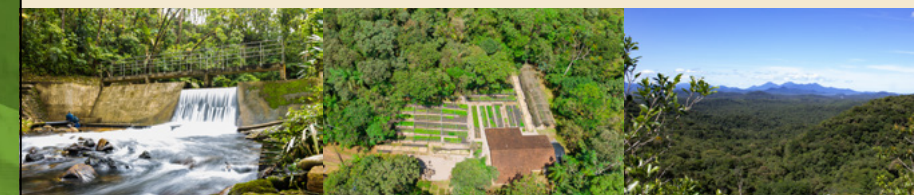
@grandereservamataatlantica
 www.grandeservamataatlantica.com.br

PROTECTED AREAS



BOM JESUS BIOLOGICAL RESERVE

This Federal Conservation Unit preserves lowland and mountain forests in the northern portion of Paranaguá Bay. Here, there's a combination of ecosystems at different altitudes, traversed by crystal-clear rivers, streams, and waterfalls visible throughout the mountain-covered expanse. It's one of the main refuges for large mammals in the region, such as the jaguar and the tapir. It also includes significant mangrove areas near the bay. This category of Conservation Unit is strictly protected and does not allow public use—only scientific research is permitted.



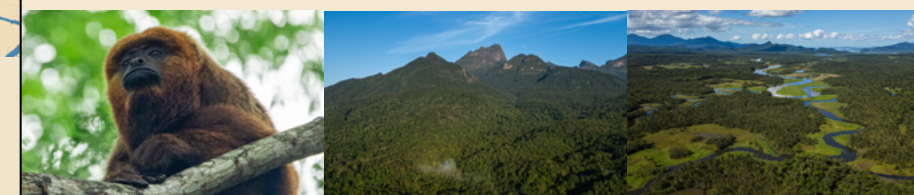
ÁGUAS NATURAL RESERVE

Established in 1994, this 2,256 hectare area was SPVS's first private nature reserve. It's home to the water catchment system that supplies the municipality of Antonina. The area's high level of preservation ensures a constant and, most importantly, high-quality water supply. In addition to a seedling nursery, the site features an agroforestry system, a meliponary for raising native bees, and an extensive network of trails—including the Arboreto Trail and the Águas Trail—which can be visited by appointment.



GUARICICA NATURAL RESERVE

The largest nature reserve managed by SPVS, this area protects 8,677 hectares stretching from the Pequeno River to the mangroves near downtown Antonina. Its infrastructure includes an Environmental Education Center, dining facilities, and accommodations. In addition to being a key area for biodiversity conservation, it offers various attractions such as natural pools, viewpoints, archaeological sites, and an extensive network of trails – including the Guaricica Trail and the Bird Trail – which can be visited by appointment.



GUARAQUEÇABA ENVIRONMENTAL PROTECTION AREA

Created in 1985, this federally protected sustainable-use area encompasses a variety of environments with great biodiversity—including mountains, coastal plains, mangroves, and islands—and is home to many endemic and endangered species. Its 283,000 hectares protect the Paranaguá Bay estuarine complex, archaeological sites, and traditional communities. The area also regulates the use of pesticides and other chemicals and establishes criteria for land use and occupation in the region.



PARANÁ PEAK STATE PARK

Although it cannot be accessed by the Vale do Gigante Portal, the view of Pico Paraná (1,877m), the highest mountain in Southern Brazil, is certainly a gift for visitors. A popular destination for mountaineers, the Park spans 4,334 hectares, protecting the Serra do Ibitiraquire, home to some of the state's most prominent rock formations, such as Caratua, Ibitirati, Ciririca, and Agudo da Cotia. Access to this Conservation Unit can be made via BR-116 highway, in the municipality of Campina Grande do Sul (PR).

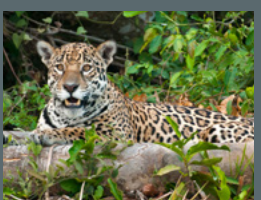
SUBTITLES

- Continuous forest
- Sustainable protected areas
- Parks and reserves
- Vale do Gigante Portal
- Portal borders
- Urban area
- Communities
- Roads

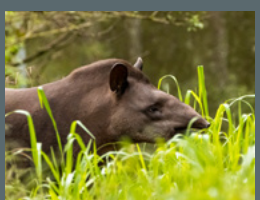
SERVICES AND REFERENCES

- Archaeological site
- Cycling
- Historic site
- Trails
- Boat tour
- Fauna watching
- Hosting
- Waterfall
- Camping
- Food production
- Lookout
- Water sports
- Culture
- Food service
- Monitor/guide

MAIN FAUNA SPECIES



Jaguar
(Panthera onca)
 This large feline, which can weigh over 100 kg, is at the top of the Atlantic Forest's food chain. Its prey includes tapirs and peccaries. Due to their social and dietary habits, they need extensive areas to survive. In the Atlantic Forest, only about 300 individuals remain.



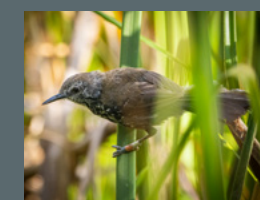
Tapir
(Tapirus terrestris)
 It is the largest terrestrial mammal in South America, reaching 1.2 meters in height, 2 meters in length, and up to 300 kg. It can be found in much of the continent but prefers aquatic environments, where it feeds on fruits and leaves, making it an important seed disperser.



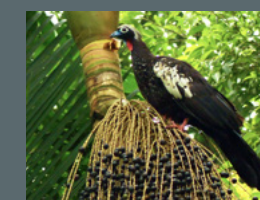
Bush Dog
(Speothos venaticus)
 Charismatic and very rare, the bush dog is one of the most curious residents of this region. It is considered the smallest and most sociable canid in the country, living in packs of up to ten individuals. It feeds on small prey and habitually digs burrows in the ground for shelter.



Buff-throated Purplelet
(Iodopleura pipra)
 A small, grayish bird that feeds on small fruits and insects it catches in mid-air. It inhabits hillside areas and reproduces in the coastal plain during winter. The male has purplish plumes hidden under its wings, which it uses to attract the female.



Marsh Antwren
(Formicivora acutirostris)
 Weighs less than 10 grams, and fewer than 7,000 individuals exist in the wild. Its main habitat is flooded areas, such as swamps and sedge beds. It feeds on insects it catches by flying agilely at low altitudes.



Black-fronted Piping-guan
(Aburria jacutinga)
 This large bird, endemic to the Atlantic Forest, measures approximately 70 cm and can exceed 1 kg. Spotting one of these individuals in nature is quite a gift, whether due to its rarity, its reserved behavior, and especially its beauty.