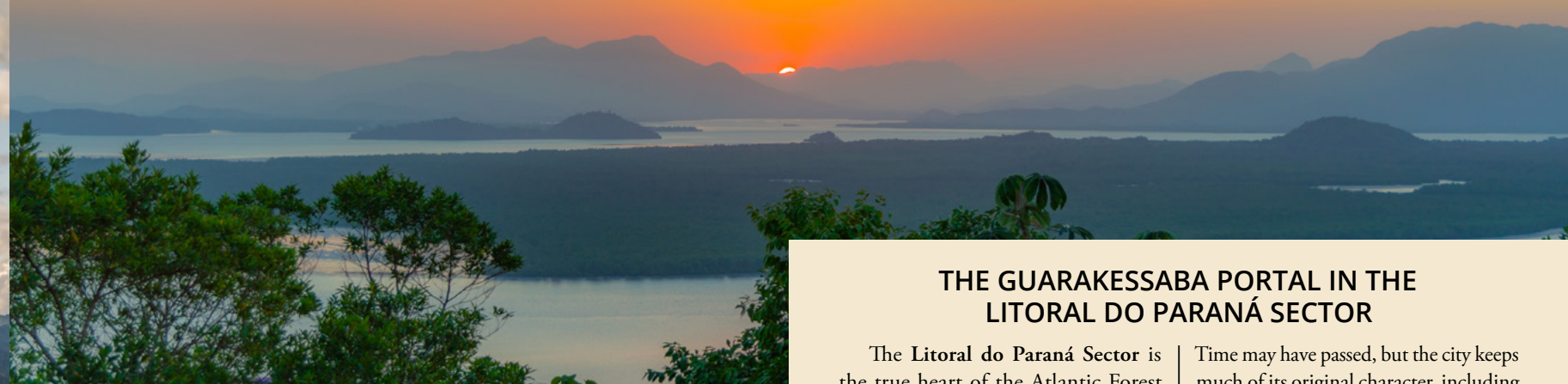


ATLANTIC FOREST GREAT RESERVE GUARAKESSABA PORTAL

Guaraqueçaba



@GrandeReservaMataAtlantica
www.grandereservamataatlantica.com.br

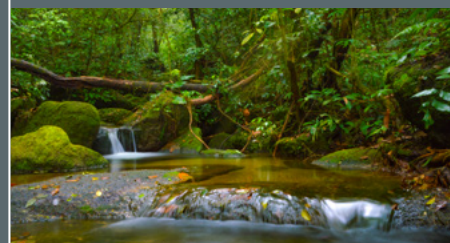


ATLANTIC FOREST GREAT RESERVE

The Atlantic Forest Great Reserve is a voluntary initiative that brings together a diverse range of stakeholders—public, private, community-based, non-governmental, and academic—to promote regional development actions focused on nature-based tourism within the largest remaining continuum of Atlantic Forest in the world. Covering around 3 million hectares of well-preserved natural environments, the area spans the states of São Paulo, Paraná, and Santa Catarina. Home to rich wildlife, mountains, caves, waterfalls, bays, mangroves, and beaches, this region is considered a significant natural, cultural, and historical heritage site. The initiative aims to position it as a nationally and internationally recognized nature tourism destination.

This movement was born from the belief that preserving and conserving

nature is essential for the planet's balance and for future generations. It promotes the idea that tourism can be a positive economic activity when practiced responsibly and sustainably, enabling a restorative economy and improving the quality of life for dozens of traditional and historic communities. This work represents a unique opportunity to conserve one of the world's most important biodiversity hotspots. The Atlantic Forest is a national treasure of Brazil and must be valued, recognized, and preserved by all.



ATLANTIC FOREST

THE GUARAKESSABA PORTAL IN THE LITORAL DO PARANÁ SECTOR

The **Litoral do Paraná Sector** is the true heart of the Atlantic Forest Great Reserve, both because of its central position and its incredible environmental variety, which ranges from the Serra do Mar mountains to beautiful bays, beaches, and islands.

In the **Guarakessaba Portal**, you will find some of the best-preserved areas of Atlantic Forest in the entire Atlantic Forest Great Reserve. The jaguar inhabits its dense forests, as do other species of large mammals such as the tapir, the white-lipped peccary, and the puma. Guaraqueçaba was one of the first spots reached by the Portuguese colonizers. It was here that the history of Paraná began.

Time may have passed, but the city keeps much of its original character, including old colonial houses, the central square facing the bay, and the *Caiçara* culture, which can be seen in traditional boats or through *Fandango* folk dance circles.

Access to the Portal can be made by boat from Paranaguá or, for the more adventurous, via the PR-405 (78 km dirt road) and the Telegraph Trail, which comes from the border with the State of São Paulo. Along the route, dozens of communities can be visited, such as Tagaçaba, Potinga, Serra Negra, Rio Verde, Batuva, and Morato, among many others.



GUIANA DOLPHINS



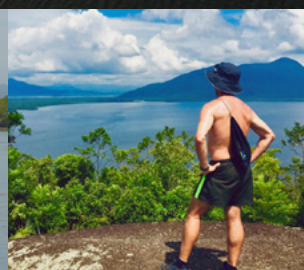
GUARAKEÇABA CITY



RABECA



STAND-UP PADDLE



MORRO DO QUITUMBÊ TRAIL



MOUNTAIN BIKE



CAIÇARA CANOE



FANDANGO CAIÇARA



THE CHURCH



SIRI PANCAKE



LOCAL PRODUCTS



FLOUR MILLS

SPORTS AND ADVENTURE

The **Guarakessaba Portal** is full of activities for getting in deep contact with nature. If you are traveling via the PR-405, an essential stop on sunny days is the **Serra Negra Viewing Point**. Another incredible view can be found at **Morro do Quitumbê**, located in the municipal seat of Guaraqueçaba, which offers the most beautiful vantage point over the bay. Watching the sunset from there is a must!

The **Estrada do Bronze** is also an excellent trail option for cycling or hiking during the day. The end of the road is rewarding: a meeting of the mangroves and the sea in a deserted wild stretch of the Guaraqueçaba Bay, where it is

possible to practice **kayaking** or **stand-up paddling**.

There is also the **Telegraph Trail**. This ancient path starts at the Batuva community and ends in a rural community in the municipality of Cananéia (SP). During the dry seasons, it is possible to complete the **trail by bike**.

Many rivers with crystal-clear water can be found in this Portal, and the Natural and Ecological Reserves in this region offer easily accessible **trails** with **waterfalls**. Additionally, visitors can take the opportunity to discover the various attractions of the Ilhas Portal.

CULTURE, HISTORY AND NATURE

The history of Paraná began in Guaraqueçaba and remains preserved in the culture, architecture, and landscapes of the Atlantic Forest. The traditional *Caiçara*, *Quilombola* and *Indigenous* communities find their primary values and activities in their harmony with nature and the traditional management of resources.

The *Caiçaras* originated from the blending of Indigenous, African, and European peoples. The building of canoes, artisanal fishing, land management, cultivation, and handicrafts are all part of this rich culture.

The *Fandango Caiçara* is a cultural expression registered as Brazilian

Intangible Cultural Heritage. It consists of music and dance based on the Caiçara daily routine of fishing, farming, and resource management. Historically, it was always linked to the collective labor efforts where community members gathered for harvesting, clearing land or building, and the organizer would compensate the volunteers with a feast and a dance. Later, it became the primary form of entertainment for these communities.

Life in this region has always followed the rhythm and beauty of this rich and dense tropical forest, where residents regularly witness scarlet ibis flocks and *Guiana dolphins* surfacing at sunset.

GASTRONOMY AND SERVICES

Guaraqueçaba is the best place to experience traditional Caiçara culture. **Community-Based Tourism** itineraries offer immersive experiences, such as catching blue crabs, fishing, and cassava flour production. In the municipal seat, where there is direct contact with the bay, the **Marisqueiras (shellfish gatherers) of the Siri Guaçu Project at Costão** offer visitors an authentic experience and delicious seafood-based dishes.

Along the PR-405, keep an eye out for the many local products sold in the roadside communities. In **Potinga**, traditional **flour mills** still make top-quality cassava flour, alongside many fresh products grown in agroforestry

systems. Passing through **Tagaçaba**, it is worth stopping to eat by the river to enjoy a typical and **delicious fish cooked in banana leaves**, caught right on the spot.

In addition to many attractions, the **Guarakessaba Portal** also offers options for hotels, inns, and campsites with different styles and prices. And one cannot miss the celebrations and festivals that take place throughout the year.

So, grab your bottle of "*mãe ca filha*" (cachaça), prepare a good plate of "**lambe-lambe**" (traditional coastal dish) to keep your energy up, tune your **rabeca** (traditional fiddle), and come discover this paradise!

KAYAK



GUARÁS



FISH COOKED IN BANANA LEAVES



ATLANTIC FOREST GREAT RESERVE

GUARAKESSABA PORTAL

CAVERNAS DA MATA ATLÂNTICA PORTAL

NASCENTES DO IGUAÇU PORTAL

VALE DO GIGANTE PORTAL

GUARAGUAÇU PORTAL



SERVICES AND REFERENCES

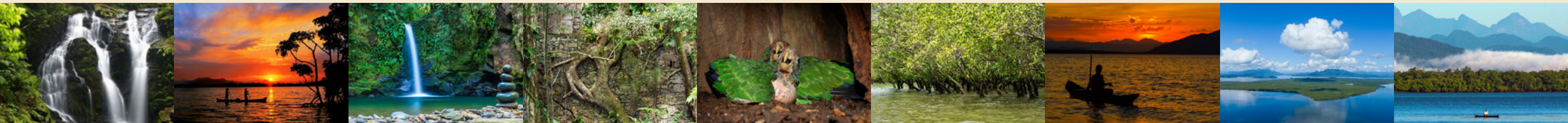
- Boat tour
- Camping
- Culture
- Cycling
- Fauna watching
- Food service
- Handcrafts
- Historic site
- Hosting
- Lookout
- Traditional communities
- Trails
- Waterfall
- Water sports

SUBTITLES

- Continuous forest
- Sustainable areas
- Parks and reserves
- Guarakessaba Portal
- Portal borders
- Communities
- Roads



PROTECTED AREAS



SEBUÍ ECOLOGICAL RESERVE

Created in 1999, this Reserve offers a variety of activities for visitors. Access is only possible by boat through the bay, departing from Guaraqueçaba or Paranaguá. The remoteness of the location is one of the main attractions, alongside a vast diversity of fauna and flora species. Visitors

can navigate different rivers, practice sports, appreciate beautiful waterfalls and cascades (of the 7 waterfalls, 3 are open for visitation), as well as schedule birdwatching sessions – a popular activity in the region due to its rich diversity of species.

PAPAGAIO-DA-CARA-ROXA NATURAL RESERVE

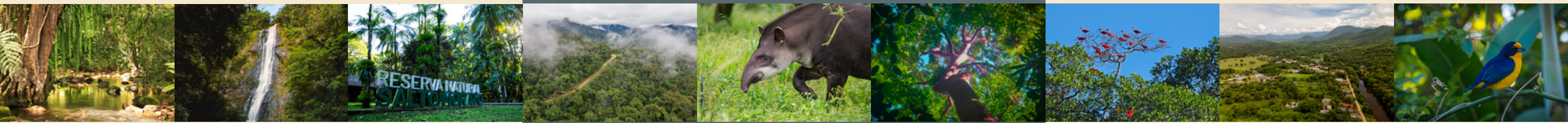
Managed by SPVS, this 6,988-hectare reserve was established on land formerly degraded by buffalo ranching. Headquartered in Tagaçaba, it spans the Serra do Itaqui, protecting mangroves and coastal plains vital to the endangered

Red-tailed Amazon parrot, which gives the reserve its name. Beyond its role in research and education, the reserve features waterfalls, viewpoints, and archaeological sites.

GUARAQUEÇABA ECOLOGICAL STATION

Created in 1982, this reserve covers an area of 5,928 hectares, consisting exclusively of mangroves, the primary ecosystem targeted for preservation. As a strictly protected area, its use is permitted only for environmental education initiatives and scientific research. Mangroves provide a many

environmental services and are crucial for protecting regional fish stocks, serving as nurseries for various estuarine and marine species, including fish, shrimp, crabs, and oysters. These areas are also habitats for several rare and endangered species, such as the Red-tailed Amazon and the Crab-eating Hawk.



SALTO MORATO NATURAL RESERVE

Located 17 km from Guaraqueçaba, Salto Morato protects vital Atlantic Forest and river headwaters. It features crystal-clear natural aquariums and a stunning 100-meter waterfall. Maintained by Fundação O Grupo Boticário, this private reserve was featured in Netflix's

Our Planet. Rich in biodiversity, it is a premier destination for nature tourism and birdwatching. Public facilities include interpretive trails, a visitor center, kiosks, a snack bar, a campsite, and an auditorium.

BOM JESUS BIOLOGICAL RESERVE

This large and sparsely populated federal Conservation Unit preserves lowland and mid-elevation forests in the northern portion of the Paranaguá Bay. There is a combination of forest ecosystems at different altitudes, traversed by crystal-clear rivers, streams, and waterfalls seen throughout the mountain-covered expanse. It is one of the primary

refuge regions for large mammals, like the jaguar, the lowland tapir, and the white-lipped peccary. It also includes significant areas of mangroves in the sections near the bay. Currently, it has no public use or management facilities. A small Guarani community lives within the reserve.

GUARAQUEÇABA PROTECTION ENVIRONMENTAL AREA

The Guaraqueçaba Environmental Protection Area is a federal sustainable-use protected area. Established in 1985, it integrates a variety of environments with enormous biodiversity, the Serra do Mar mountain range, coastal plains, mangroves, and islands, containing many endemic and endangered species. Its 283,000 hectares span parts of

Guaraqueçaba, Antonina, Paranaguá, and Campina Grande do Sul. It protects the Paranaguá Bay estuarine complex, archaeological sites, and traditional communities; it also controls the use of pesticides and other chemicals and establishes criteria for land use and occupation in the region.

